

DPU Series *Piano Style DIP Switches with "Extended Actuators"*

FEATURES:

- Available with extended actuators
- "ON" in up position

TYPICAL PERFORMANCE CHARACTERISTICS:

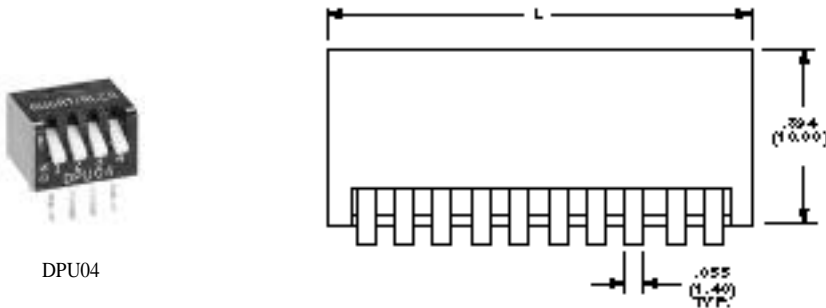
Contact Rating0.4 VA @ 20 VDC max.
 Initial Contact Resistance.....50 Milliohms max.
 Insulation Resistance100 Megohms min. @ 100 VDC
 Dielectric Strength500 VDC @ sea level
 Actuation Force.....400 Grams max.
 Actuator Travel30°
 Life Expectancy1,000 Cycles

MATERIAL SPECIFICATIONS:

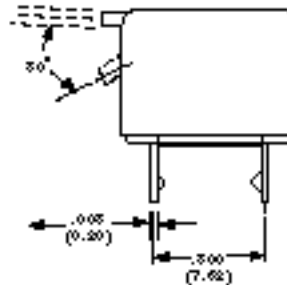
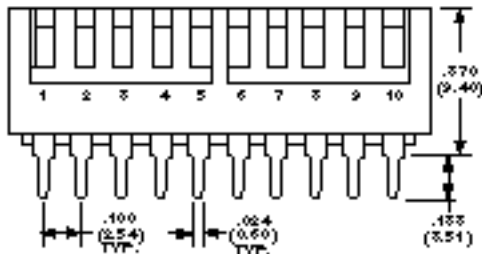
Contacts.....Gold flash over nickel over copper alloy
 Actuator.....Polyamide UL94V-0
 CasePPS UL94V-0 black
 CoverPPS UL94V-0 black
 TerminalsTin lead over copper alloy

ENVIRONMENTAL SPECIFICATIONS:

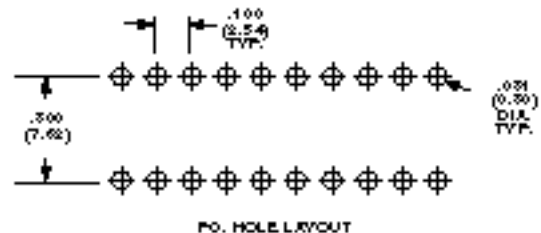
Operating Temperature.....-20°C to +85°C (-40°F to +185°F)
 Storage Temperature.....-55°C to +85°C (-67°F to +185°F)
 Solder Heat Resistance245° ± 5°C for two seconds when mounted on a .062" thick PCB with switch in "OFF" position per MIL-STD 202, Method 210



DPU04



HOW TO ORI



PO. HOLE LAYOUT

Actuator Styles
 U = Extended

Poles	Body Length "L"
4	.494 (12.54)
6	.694 (17.62)
8	.894 (22.70)
10	1.094 (27.78)

Piano Style DIP Switches DPU/SD, DPU/DS Series

TYPICAL PERFORMANCE CHARACTERISTICS:

Contact Rating0.4 VA @ 20 VDC max.
 Initial Contact Resistance.....50 Milliohms max.
 Insulation Resistance100 Megohms min. @ 100 VDC
 Dielectric Strength500 VDC @ sea level
 Operation Force400 Grams max.
 Actuator Travel30°
 Life Expectancy1,000 Cycles

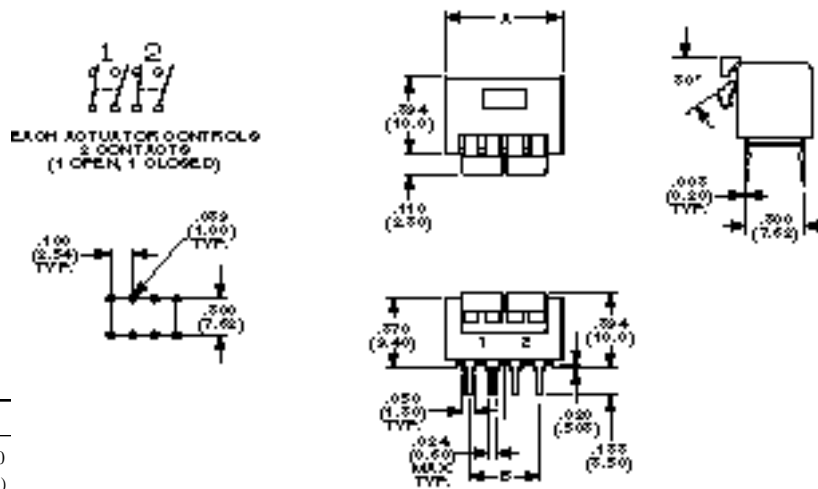
MATERIAL SPECIFICATIONS:

Contacts.....Gold flash over nickel over copper alloy
 Actuator.....Polyamide white-ivory color UL 94V-0
 BasePPS UL94 V-0 black
 HousingPPS UL94 V-0 black
 TerminalsTin lead over copper alloy

ENVIRONMENTAL SPECIFICATIONS:

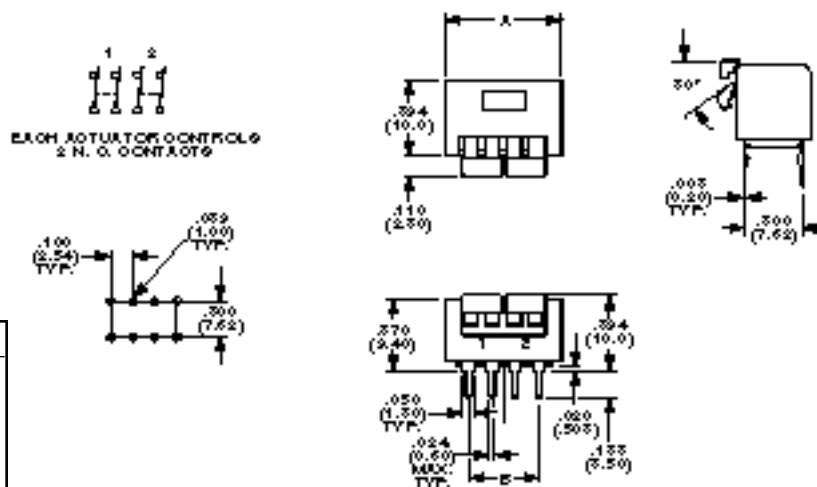
Operating Temperature.....-20°C to +85°C (-4F to +185°F)
 Storage Temperature.....-55°C to +85°C (-67°F to +185°F)
 Solder Heat Resistance260±5°C For two seconds when mounted on a .062" thick PCB with switch in "OFF" position per MIL-STD 202, Method 210

DPU/SD



Part No.	Dim. A	Dim. B
DPU02SD	.494 (12,54)	.300 ± .010 (7,62±0,25)
DPU04SD	.894 (22,7)	.700 ± .010 (17,78±0,25)

DPU/DS



Part No.	Dim. A	Dim. B
DPU02DS	.494 (12,54)	.300 ± .010 (7,62±0,25)
DPU03DS	.694 (17,62)	.500±.010 (12,7±0,25)
DPU04DS	.894 (22,7)	.700 ± .010 (17,78±0,25)
DPU05DS	1.094 (27,78)	.900 ± .010 (22,86±0,25)

Need more technical information?

Contact your local ABE office--(800) 453-1692--or AboveBoardElectronics.com

Above Board Electronics
 1918 Junction Avenue
 San Jose, CA 95131

DTS Series *DIP Switch*

MATERIAL SPECIFICATIONS:

Contacts.....Gold flash over nickel
 Case MaterialGlass filled thermoplastic
 Terminals/Fixed Contacts.....Gold flash over nickel
 Terminal Seal.....Epoxy
 Process Seal.....Tape

ENVIRONMENTAL SPECIFICATIONS:

Operating Temperature.....-10°C to +60°C (-14°F to +140°F)
 Storage Temperature.....-20°C to +85°C (-4°F to +185°F)
 Solder Heat ResistanceHand Soldering: 350°C for 30 seconds
 Wave: 260°C ± 5° for 10 seconds

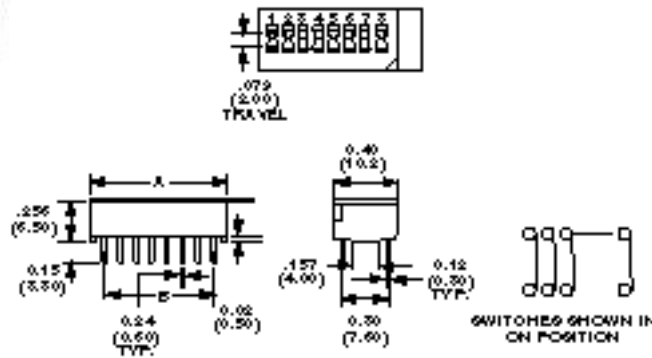
TYPICAL PERFORMANCE CHARACTERISTICS:

Contact RatingNon-switching: 100mA @ 50 VDC
 Switching: 100mA @ 5 VDC typ.,
 25mA @ 24 VDC max.
 Initial Contact Resistance.....100 Milliohms min.
 Insulation Resistance100 Megohms min.
 Dielectric Strength500 VDC @ sea level
 Actuation Force.....700 Grams max.
 Plunger/Actuator Travel079/2mm
 Life Expectancy2,000 Cycles

DTS



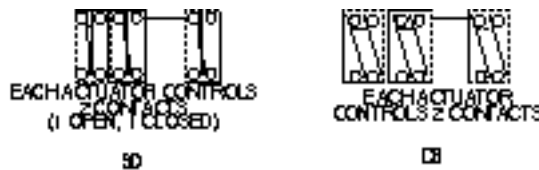
DTS8



Model	A	B
DTS1	5.0/197	----
DTS2	7.20/283	2.54/100
DTS3	9.8/386	5.08/200
DTS4	12.3/484	7.62/300
DTS5	14.9/587	10.16/400
DTS6	17.4/685	12.7/500
DTS7	20.0/787	15.24/600
DTS8	22.6/890	17.78/700
DTS9	25.1/988	20.32/800
DTS10	27.5/1.083	22.86/900

Model	Type	Markings	Actuator Style
DTS1	1PST	1	Slide
DTS2	2PST	1 through 2	Slide
DTS3	3PST	1 through 3	Slide
DTS4	4PST	1 through 4	Slide
DTS5	5PST	1 through 5	Slide
DTS6	6PST	1 through 6	Slide
DTS7	7PST	1 through 7	Slide
DTS8	8PST	1 through 8	Slide
DTS9	9PST	1 through 9	Slide
DTS10	10PST	1 through 10	Slide

DTS



Model	A	B
DTS1DS/SD	7.20/283	2.54/100
DTS2DS/SD	12.3/484	7.62/300
DTS3DS/SD	17.4/685	12.7/500
DTS4DS/SD	22.6/890	17.78/700
DTS5DS/SD	27.5/1.083	22.86/900

Model	Type	Markings	Actuator Style
DTS1DS	DPST	1	Slide
DTS2DS	DPST	1 through 2	Slide
DTS3DS	DPST	1 through 3	Slide
DTS4DS	DPST	1 through 4	Slide
DTS5DS	DPST	1 through 5	Slide
DTS1SD	DPST/N.O.-N.C.	1	Slide
DTS2SD	DPST/N.O.-N.C.	1 through 2	Slide
DTS3SD	DPST/N.O.-N.C.	1 through 3	Slide
DTS4SD	DPST/N.O.-N.C.	1 through 4	Slide
DTS5SD	DPST/N.O.-N.C.	1 through 5	Slide

